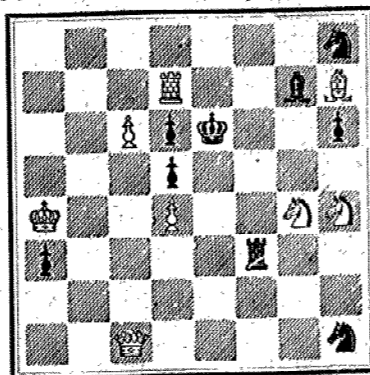
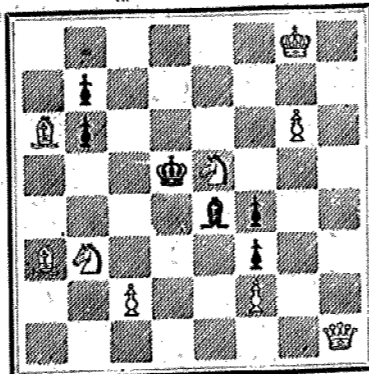


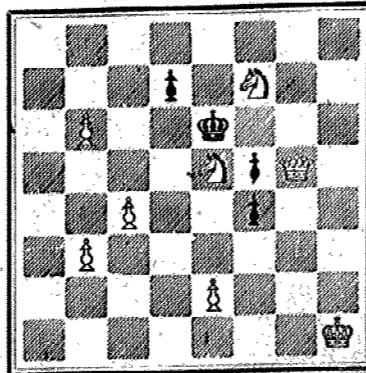
705. F. Madsen, Kjertominde.



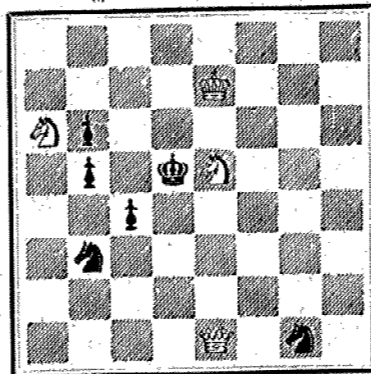
Mat i 3 Træk.

707. A. W. Malmström, Eskilstuna.
(„Vårt Land“).

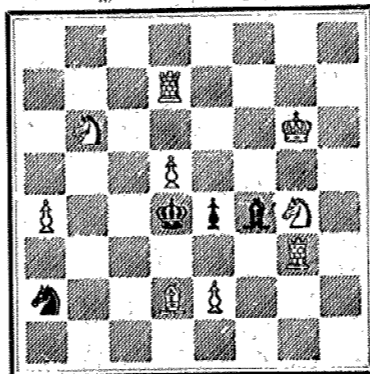
Mat i 3 Træk.

709. J. V. Pilnacek, Prag.
(„Zlatá Praha“).

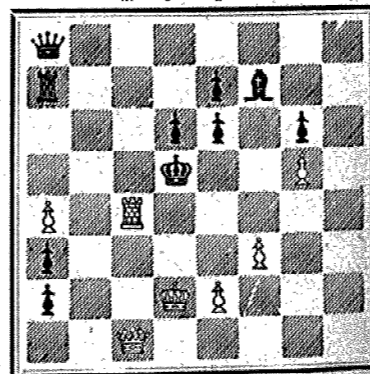
Mat i 3 Træk.

706. A. Münck, Baaring.
(„Nationaltidende“).

Mat i 2 Træk.

708. R. Schulder, Köln.
(„Saale Zeitung“).

Mat i 3 Træk.

710. V. Marin, Barcelona.
(„Ruy Lopez“).

Mat i 3 Træk.

Partier.

360. Engelsk Partl.

Spillet i Københavns Skakforening den 6. Maj 1897.

J. Møller.	J. Giersing.
Hvid.	Sort.

1 e2—e4	e7—e5
2 Sg1—f3	Sb8—c6
3 e2—c3	Sg8—f6
4 d2—d4	c5×d4
Bedre er 4 . . . Sf6×e4.	
5 e4—e5	Sf6—d5
6 Lf1—b5	Lf8—e7
7 S f3×d4	Sc6×e5
8 Sd4—f5	c7—c6
9 S f5×g7†	Ke8—f8
10 Lc1—h6	Dd8—b6!

Efter dette stærke Træk synes Hvid markværdigvis ikke at kunne opnaa noget ved sit Angreb; Styrken ved Dronningetrækket heror navnlig paa, at Lh6 event. bliver angrebet, og at Sort, som det viser sig, kan fremtvinge Afbytning af Dronninger paa e6.

11 Dd1—c2 c6×b5
12 Sg7—f5† Kf8—g8
Paa 12 . . . Kf8—c8 13 De2×e5, og Sort kan nu ikke komme med Dronningen til e6 paa Grund af Sf5—g7†.

13 De2×e5 Db6—c6
14 Lh6—g7 f7—f6
15 S f5×e7†

Paa 15 De5×e6†, d7×e6 16 Lg7×h8, e6×f5 faar Sort to smaa Officerer for Taarnet.

16 Kg8×g7
17 S e7×d5 d7×e6
18 De5×e6 d7×e6
19 S e7×d5 e6×d5

Partiet har nu fuldstændig opløst sig, dog har Hvid tilsyne-

ladende en lille Fordel i sin bedre Bondestilling.

18 Sb1—a3 Lc8—d7

19 0—0—0

Bedre var 19 Ke1—d2 og derefter Sa3—c2—d4.

19 Ld7—c6

20 Sa3—c2 Th8—e8

21 S e2—d4 a7—a5

22 Th1—e1 Te8—e5

23 f2—f4 Te5—e4

24 Te1×e4

Herved giver Hvid Modstanderen en Fribonde, der senere volder adskilligt Bryderi; bedre synes 24 f4—f5 for at kunne anbringe Springeren paa e6.

24 d5×e4

25 Sd4×c6 b7×c6

26 Td1—d7† Kf7—g6

27 Td7—c7 Ta8—d8!

Meget godt spillet; den hvide Konge er nu foreløbigt afspærret, og Hvid kan ikke slaa c-Bonden paa Grund af 27 . . . Kg6—f5 28 Te6—c7 (28 g2—g3, e4—e3), Kf5×f4 29 Te7—c7, f6—f5 og den sorte Fribonde kan ikke standses.

28 g2—g4 h7—h5

29 h2—h3 Td8—d3

30 Tc7×c6 Td3×h3

31 g4—g5 e4—c3

32 Tc6×f6† Kg6—g7

33 Tf6—e6 Th3—f3

34 Ke1—d1 Tf3×f4

35 Te6×e3

Efter dette Træk kan Hvid kun opnaa Remis. Større Chancer bød

1. The first part of the document discusses the importance of maintaining accurate records of all transactions and activities.

2. It also emphasizes the need for transparency and accountability in all financial dealings.

3. The document further outlines the various methods and tools used to collect and analyze data.

4. It details the procedures for ensuring the integrity and security of the data collected.

5. The document also describes the process of identifying and resolving any discrepancies or errors that may arise.

6. It provides a comprehensive overview of the data analysis techniques used to extract meaningful insights from the collected information.

7. The document concludes by highlighting the overall benefits and value of a robust data management and analysis system.

8. It also discusses the challenges and limitations associated with data management and analysis.

9. The document provides a detailed guide to the various software tools and platforms available for data management and analysis.

10. It also includes a list of key performance indicators (KPIs) used to measure the effectiveness of the data management and analysis process.

11. The document concludes with a summary of the key findings and recommendations.

12. It also includes a list of references and sources used in the research and analysis.

13. The document also discusses the importance of maintaining accurate records of all transactions and activities.

14. It also emphasizes the need for transparency and accountability in all financial dealings.

15. The document further outlines the various methods and tools used to collect and analyze data.

16. It details the procedures for ensuring the integrity and security of the data collected.

17. The document also describes the process of identifying and resolving any discrepancies or errors that may arise.

18. It provides a comprehensive overview of the data analysis techniques used to extract meaningful insights from the collected information.

19. The document concludes by highlighting the overall benefits and value of a robust data management and analysis system.

20. It also discusses the challenges and limitations associated with data management and analysis.

21. The document provides a detailed guide to the various software tools and platforms available for data management and analysis.

22. It also includes a list of key performance indicators (KPIs) used to measure the effectiveness of the data management and analysis process.

23. The document concludes with a summary of the key findings and recommendations.

24. It also includes a list of references and sources used in the research and analysis.



D

